



DINNINGTON
HIGH SCHOOL
SIXTH FORM

Prospectus

2023/24

Part of
LEAP
Multi Academy Trust



Welcome

The sixth form at Dinnington High School is a vibrant and welcoming environment offering a range of A level, BTEC and OCR qualifications. We are a growing sixth form with high academic standards and pride ourselves on our preparation of students for success beyond school. We ensure they have academic qualifications, personal skills and qualities, and experiences for the future they choose, be it university, further training or employment.

We are committed to supporting our students to enable them to realise their full potential. We are extremely proud of the successful routes they take beyond sixth form; our students leave with academic success but also the kind of skills and qualities that are demanded by employers and universities alike.

We have a sixth form team of dedicated and experienced staff who all work to provide students with the support they need to achieve excellence. In the first instance this is about helping each student identify an aspirational but appropriate programme of study which meets their individual needs and takes in to account any aspirations they may have. Students are required to gain a minimum of 6 GCSE grades 4-9 to access level 3 (A Level and BTEC) courses. These should include English Language and maths.

In addition to our course offer we also host a football scholarship programme with Dinnington Town FC, offering students the opportunity to gain high quality academic qualifications, additional coaching and a clearly defined pathway in to the next level of performance. Our scholarship leader, Mr Kay is an ex-professional footballer and current Manchester United scout.

We are proud of our reputation for excellence and all students completing a two year programme progressing on to higher education or employment. This is one of the reasons that increasing numbers of students choose Dinnington. Recently, the range of university courses students have progressed to is vast – from aerospace

engineering in Swansea to medicine at the University of Sheffield. Students have also progressed into employment at prestigious settings such as Rolls Royce, Jaguar Land Rover and Dyson to name but a few. We pride ourselves on our bespoke approach to advice and guidance recognising that no two students are the same.

Why not join us and become part of a tradition of success? Change second sentence to: We are proud of our results, which compete with other sixth forms nationally, as well as our warm and welcoming environment for the next level of learning. Before courses begin students will be provided with enough information to make informed decisions about courses. We host an open evening and hold interviews following the initial application to discuss your individual requirements. Following GCSE results in August we invite students for another personal interview to make sure that the course choices are still suitable prior to enrolling them on to courses.

The aim of this prospectus is to give you an outline of what we offer at Dinnington High School sixth form but of course if you require any more advice please don't hesitate to contact us (see contact details) We look forward to welcoming you to our Sixth Form.

The Sixth Form Team



“Guidance lessons help us understand what we need to do outside of subjects to make sure we can get to university”



Sixth Form Life

Life in the sixth form is very different to years 7-11 regardless of which school you attended previously. Advanced level courses are very demanding and you will need to manage your study, personal and work life effectively if you are to succeed and progress into higher education.

How many lessons you will have depends on how many subjects you study. You can expect to have four hours teaching per subject you have taken and you should aim to match this amount for your own independent learning outside of the classroom.

To support you with your studies the sixth form has excellent facilities. Students have access to a well-equipped sixth form study room where a member of staff can support you with your work. The school day will start at 9am. This allows you to get straight into your studies. One hour per week will be allocated towards you having a session with a tutor who will support you with guidance and support. Tutor sessions are designed to support you and your studies. They give you a chance to have one-to-one tutorials with expert guidance and support.

There are many opportunities for you to develop a healthy CV by getting involved with initiatives such as the sixth form Student Leadership programme, Enrichment programme, transition mentors and student councils.

As the sixth form is part of an 11-18 school, there are opportunities for you to get involved in the wider school community. A rich and varied CV will help you to secure a successful future.





Careers Advice

Comprehensive Programme of Careers Advice

We offer a comprehensive programme of careers advice which has been highly praised. We work closely with the careers service and have personal advisers working in the school. Careers advice starts from the moment students express an interest in joining us.

Expert Advice on Degree Courses

We offer expert advice on degree courses. A number of our students gain valuable work experience placements whilst in the sixth form; many are successful candidates for engineering, business and medical courses at top universities.

Individual Support & Guidance

The sixth form team works hard to ensure every student is given planned, targeted support that will enable them to achieve their full potential.

Academic tutoring – Personal Development

Students are grouped in Year 12 or Year 13 tutor groups so that additional support carefully meets the needs of the learners at any given point. The tutor programme ensures that all learners develop personal and social skills, and that they understand how to keep themselves safe and healthy, both physically and emotionally. Students will all have access to 1 hour of this per week.

Students will be supported by staff within these sessions, some including 1:1 tutorials.

Frequently Asked Questions

What and how many subjects should I study?

We expect most students to take three subjects. A very small minority take four. If you choose to embark on the football scholarship programme, you can only take three other subjects. Advanced level courses are challenging with high workloads so three subjects is plenty. No university expects four subjects. In exceptional circumstances, if you have met all other criteria but miss your Grade 4 in English or maths, we might look at you only studying two advanced qualifications while you take your resits, and then pick up an additional option once passed in Y13.

If you are uncertain about what you want to do in the future then keep your subject choices varied to give you as many study and career options as possible.

How do I decide where to study my A Levels?

Again, you must do your research. Some students say they want a change from a school setting but studying in Sixth Form is very different to Y7-11 and the relationship you have with your teachers is also very different. Attending open events is crucial so that you can compare what is on offer at each provider and make an informed choice about what and where to study Post 16. As well as thinking about the course choices think about how much support will be available to you to help you make the most of the experience.

How Do I Apply?

If you are already a student at Dinnington High School you don't need to do anything, the sixth form teachers will guide you through the process at the relevant time and your interview will be during usual school hours.

If you currently do not attend Dinnington High School then you can apply directly. Contact us at sixthform@din.leap-mat.org.uk for an application pack and once we receive your completed application form then we will invite you in for a tour of the school and interview. Guidance on subject choices will be provided to you at interview.

Key Dates

Thursday 12th October 2023
Sixth Form Open Evening

Monday 30th October 2023 onwards
External applicants can start contacting us to discuss whether DHS Sixth Form is the right choice for you.

Tuesday 7th November 2023
DHS Y11 mock exams start

Wednesday 13th December 2023
DHS students' Y11 mock results day

Thursday 11th January 2024
Y11 Parents' Evening

January 2024
Opportunity to discuss sixth form choices further with your mentor

Tuesday 20th February 2024
DHS Y11 mock exams start

March 2024
Follow-up meetings with mentors about sixth form choices

April 2024
Offer letters sent to students

Thursday 22nd August 2024
GCSE Results Day 2024
Enrol in sixth form for September start

Beyond the Classroom

At Dinnington High School there are many ways for sixth form students to gain valuable skills and experience outside the classroom as well as within it.

Sixth Form Prom

The Sixth Form Prom is a magical evening of celebration where students and staff can get together after the hard work of the exams. The Prom Committee organise special touches to personalise the prom for each year group. The prom is a very special evening for everyone, and an event remembered for many years by staff and students alike.

Student Leadership Programme

The student leadership programme is an essential part of Dinnington High School. Student leaders help organise activities as well as representing the sixth form at events with lower school students and members of the wider school community.

Student leaders meet once a week to work alongside Year Leaders to review school policies and procedures, ensuring the student voice is heard and the sixth form is the best it can possibly be. It is a valuable role and really helps to develop key skills that employers and universities are looking for.

Student leaders will also play a big role in lower school, working with students from younger years on charity events and celebrations.

Enrichment Opportunities

At Dinnington High School, we believe that education continues outside the classroom and thus we are committed to broadening the skills and experiences of our students. Every student in our sixth form takes part in weekly enrichment activities, which will improve their chances of securing positions in employment and university once they leave us. There are a wide variety of enrichment opportunities available to students, in and out of the school environment, and we encourage students to proactively seek activities that they feel passionate about. In previous years students have completed an Extended Project Qualification, volunteered in the community, organised charity events and supported younger students in school.

Sports Ambassadors

The PE department offer all post-16 students the opportunity to support the department by becoming a Sports Ambassador. As part of this role you will look to support the department in the running of and supporting extra-curricular clubs. You must complete a minimum of 20 voluntary hours throughout the year – this will contribute to your enrichment hours. You will get the opportunity to purchase the kit below which can be worn when supporting the department.



Sports Tour

At Dinnington High we provide a wealth of opportunities to travel the world playing sport. We run bi-annual trips to some breathtaking destinations to play a variety of sports including Football, Hockey, Netball, Cricket & Rugby. In previous years we have taken touring parties to places such as India, Canada, South Africa and the USA. As a Y12 student you will have the chance to sign up for this once in a lifetime opportunity to visit some incredible locations.

Football Scholarship

Dinnington High school offers a Football Scholarship for post 16 students.

The scholarship is in partnership with Dinnington Town Football Club

which sees the scholars train and play on Dinnington Towns ground 3G pitch.

The Scholars have 4 hours of football a week that is in curriculum time.

Scholars purchase a tracksuit which they have as uniform for in sixth form.

The team plays in the Sheffield and Hallamshire Colleagues League on a Wednesday afternoon.

The scholarship runs for two years which runs aside their academic courses, Dinnington High School has a partnership with Sports Recruiting USA scholarships for students that may want to go to University in the USA, this has seen 3 students go to the USA to play and study at a USA university.

Mr Kay is the head of football who is a UEFA coach and has experience playing at professional clubs and coached with England, Manchester City and currently Manchester United.

Philosophy and Ethics

In addition to the weekly Guidance lesson, all students also have an alternate week philosophy and ethics lecture. This helps prepare those going on to University to a different way of learning. It also broadens students' wider knowledge and cultural capital for life in modern Britain.



"Staff will always go that extra mile to help make sure that you can succeed- even at weekends and in the holidays!"

16-19 Bursary Fund

The 16-19 Bursary Fund was set up by the Department for Education in September 2011 to replace the Educational Maintenance Allowance (EMA) system. The funding is intended to give financial support to students who would otherwise experience difficulties in continuing or completing their courses of study or in accessing the full range of educational opportunities.

Funding provided to the school is limited and is only available to sixth form students. To be eligible to receive a bursary a young person must be aged under 19 on 31st August in the academic year in which they start their programme of study.

The school seeks to ensure that:

- Priority is given to students from the families with the lowest household income and or highest demonstrated need.
- Funding is distributed fairly via a process which is transparent and easily understood.
- Applications for funding are assessed taking into account the financial circumstances of the applicant and the intended use of the award.

There are two categories of applicant:

- i. Priority groups
- ii. Other applicants

Students are deemed to be in a priority group if they are:

- Young people who are looked after children in the care of the Local Authority or foster parents.
- Care leavers (i.e. aged 16+ [usually 18] coming out of the care system in order to live independently).

- Those young people who receive Income Support or Universal Credit in their own name.
- Disabled young people in receipt of both Employment Support Allowance and Disability Living Allowance or a personal independence payment, both in their own name.
- Students in priority groups receive funding from central government funds.

Other students may apply for bursaries if financial barriers are preventing full access to 16+ studies and/or enrichment and extension activities. Priority will be given to applicants with the lowest household income. Standard expectations MUST be met before any bursary can be awarded.

Applicants may make an application for a bursary for any purpose and cover costs for:

- The purchase of books/equipment.
- Transport costs (public transport) to and from school.
- Trips and visits organised by school.
- University interviews.
- Open days.

Applications are considered at the start of the academic year, and payments will be made to successful applicants each

half term if the following standard expectations have been met:

- i. 96%+ attendance
- ii. committed and/or excellent grades during assessments points
- iii. statement of expectations issued at the start of the year

Students must also meet the statement of expectations as stated in the sixth form learning agreement.

For more details students can collect a copy of the school policy and an application form from the sixth form study area in September.

The Bursary is funded by central government on an annual basis. This information is correct at the time of going to print but does not constitute a guarantee that Bursary funding will be available in 2024/25.



Courses & Options

A Level

- Biology
- Chemistry
- English Language
- English Literature
- Fine Art
- French
- Further Mathematics
- Geography
- Graphic Design
- History
- Mathematics
- Photography
- Physical Education
- Physics
- Product Design
- Psychology
- Sociology
- Spanish

Vocational/Applied

- Business
- Creative Digital Media Production
- Engineering
- Health and Social Care
- IT
- Sport and Physical Activity

Creative Arts

Fine Art	14
Creative Digital Media Production	14
Graphic Design	15
Photography	15

Languages & Literature

English

English Language	18
English Literature	18

Modern Foreign Languages

French	19
Spanish	19

Humanities

Geography	22
History	23

Business & IT

Business	24
IT	25

Mathematics

Mathematics	26
Further Mathematics	26

Physical Education

Physical Education	28
Sport (Single, Double, Triple)	28

Science

Biology	30
Chemistry	30
Physics	31

Social Sciences

Health and Social Care	32
Psychology	33
Sociology	33

Engineering & Design

Engineering	36
Product Design	36

Creative Arts

A Level

Fine Art

Entry Requirements

Students are required to achieve a grade 4 or above in GCSE Art

Study Topics

This is a painting and drawing based course supported with photography.

The painting is primarily and not exclusively oil paint based, and students will draw extensively. Most of the work produced and marked will feature a personal project or theme chosen by discussion by staff.

Students work in a dedicated A level studio with their own permanent working space. This enables committed students to work in free periods whenever they choose.

Assessment

Students have their work regularly assessed in either group or individual unit reviews when all their work is appraised and targets set.

60% of the total mark will be based on coursework.

40% of the total mark will be based on an externally set task (exam)

Where could it lead to?

The visual arts are an internationally recognised strength for the British

economy and it is still expanding while other jobs sectors are shrinking.

British artist and designers are in great demand and this can lead to careers in industry, the media and teaching. It is massively competitive and students need to be highly motivated and committed.

BTEC Level 3 National Extended Certificate

Creative Digital Media Production

Entry Requirements

Students are required to achieve a grade 4 or above in GCSE media (if taken at GCSE) and a grade 4 or above in English language

Study Topics

- Media Representations
- Pre-Production Portfolio
- Responding to a Commission
- Film Production

Assessment

2 externally assessed units (58%)

Unit 1 - Media Representations
(90 guided learning hours)
2 hour examination

Unit 8 - Responding to a Commission
(120 guided learning hours)
supervised assessment

2 internally assessed units (42%)

Unit 4 - Pre Production Portfolio
(90 guided learning hours)
Assignment Based

Unit 10 - Film Production - fiction
(60 guided learning hours)
Assignment Based

Where could it lead to?

A variety of HE courses, apprenticeships and jobs relating to the creative media industries; such as advertising and marketing, digital media production, TV/film production, journalism, radio, social media, public relations, print media, web design and game design.

A Level

Graphic Design

Entry Requirements

Students are required to achieve a GCSE 4+ in any creative subject.

Study Topics

This course is a practical based design and advertising investigation. Students will learn how to use industry standard programmes such as Photoshop, Illustrator and In-Design. Throughout the 2 years they will produce a series of personal projects or themes chosen by discussion with staff. Photography will also be an element of the course, but it will but it will be primarily digital based.

Assessment

Students have their work regularly assessed in either group or individual "unit reviews" when all their work is appraised and targets set.

60% of the total mark will be based on coursework.

40% of the total mark will be based on an externally set task (exam)

Where could it lead to?

The visual arts are internationally recognised strength for the British economy and is still expanding while some other job sectors are shrinking. British artist and designers are in great demand and this can lead to careers in industry the media and teaching. It is massively competitive and students need to be highly motivated and committed.

A Level

Photography

Entry Requirements

As most students will not have studied photography previously the department wish to recruit students who have an interest and commitment to the subject.

Study Topics

This course is a practical based photographic investigation of a personal project or theme chosen by discussion with staff.

Dark room based traditional photography will also be an element of the course but it will be primarily digital based.

Students do not need expensive equipment (although it is always advantageous) but many students can be very successful with a good camera phone.

Assessment

Students have their work regularly assessed in either group or individual "unit reviews" when all their work is appraised and targets set.

60% of the total mark will be based on coursework.

40% of the total mark will be based on an externally set task (exam)

Where could it lead to?

The visual arts are an internationally recognized strength for the British economy and is still expanding while some other job sectors are shrinking.

British artists and designers are in great demand and this can lead to careers in media and teaching. It is very competitive and students need to be highly motivated and committed





*“We have great facilities
in Art - our own studio
to work in out of lesson
time - you can go
anytime and work at
your own pace.”*

Language & Literature

A Level

English Language

Entry Requirements

Students are required to achieve a grade 5 or above in English Language GCSE.

Study Topics

The course is quite different to GCSE English Language - it looks at how language is used in the real world.

Students will study how different people use language and how power is conveyed through it. If you like to ask questions of the world, and are interested in finding out more about how the language you use every day actually works, then this course is for you!

Textual Variations & Representations

Looking at how language is used to create ideas and represent concepts and social groups.

Child Language Development

Looking at how children learn how to speak, read and write.

Language Diversity

Looking at how different social groups use language - men, women, teenagers - what is the difference? You will study different accents and dialects and people's perceptions of them.

Language Change

Looking at how our language has changed through the ages to become the language we speak today.

Assessment

Terminal exam (2 papers) at end of two year course and coursework (*original creative writing and language investigation into an area of students own choice*) 20%

Where could it lead to?

Students who have studied A level Language have gone on to study at top Russell group universities in a range of areas.

Careers that past students have gone on to have included, media/advertising, teaching, journalism/broadcasting, writing, linguistic studies and publishing.

A Level

English Literature

Entry Requirements

Students are required to achieve a grade 6 or above in English Literature GCSE

Study Topics

If you love reading, and talking about what you have read, then you will love literature. Students will read a range of texts, both older and contemporary, in a range of genres and will be equipped with the tools to analyse them in a sophisticated way.

Students will study:

- Aspects of tragedy/comedy incorporating study of a Shakespeare text, a drama text and a further text.

- Elements of crime writing/political writing incorporating one post 2000 prose text, a poetry and a further text.

Assessment

Terminal exam (2 papers) at end of two year course and coursework (*this is your opportunity for an independent study, producing two essays on a poetry and a prose text of choice, linked to a pre-released critical anthology. One of the texts can be creative.*) 20%

Where could it lead to?

Top universities look very highly on English Literature and it is considered a 'facilitating' subject that can enable greater access to whatever you choose to study.

Careers that past students have gone on to have included, teaching, writing, law and journalism/broadcasting.

A Level

French

Entry Requirements

Students are required to achieve a grade 5 or above in GCSE French.

Study Topics

Modern and Traditional Families in France

How French families have changed over time and what has influenced those changes

Cyberspace

The increasing use of the internet and other devices and their impact both positive and negative on modern life.

Charity work

Helping those less fortunate and how it transforms lives.

Immigration

The causes and effects of immigration, what it brings to the French economy and culture.

Racism

Modern day attitudes to foreigners in France, anti-racism groups and government legislation to help combat it.

In addition we study a classic French novel and film.

Assessment

Paper 1 - Written exam: 2 hours 30 minutes 100 marks allocated (50%)

Paper 2 - Written exam: 2 hours 80 marks allocated (20%)

Paper 3 - Speaking exam: 21–23 minutes 60 marks allocated (30%)

Where could it lead to?

Possible careers opportunities include, interpreter, secondary school teacher, translator, broadcast journalist, detective, diplomatic service officer, English as a foreign language teacher, international aid/development worker, marketing executive, patent examiner, sales executive.

A Level

Spanish

Entry Requirements

Students are required to have achieved a grade 5 in GCSE Spanish, preferably having done the higher tier papers.

Study Topics

Modern and Traditional Values

How Spanish families have changed over time and what has influenced those changes.

Cyberspace

The increasing use of the internet and other devices and their impact both positive and negative on modern life.

Equal Rights

The fight for equality for women and the LGBT movement.

Immigration

The causes and effects of immigration, what it brings to the Spanish economy and culture.

Racism

Modern day attitudes to foreigners in Spain, anti-racism groups and government legislation to help combat it.

In addition we study a classic Spanish play and film.

Assessment

Paper 1 (listening and reading)

Written exam: 2 hours 30 minutes

100 marks - (50%)

Paper 2 (literature paper)

Written exam: 2 hours

80 marks in total - (20%)

Paper 3 (speaking exam)

Oral exam: 21–23 minutes

(including 5 minutes preparation time)

60 marks in total - (30%)

Where could it lead to?

Possible careers opportunities include, interpreter, secondary school teacher, translator, broadcast journalist, detective, diplomatic service officer, English as a foreign language teacher, international aid/development worker, marketing executive, patent examiner, sales executive, tour manager and logistics and distribution manager.





A Level

Geography

Entry Requirements

Students are required to achieve at least a grade 5 at GCSE Geography. We would also like students to gain a grade 5 in English and a grade 4 in Maths.

Study Topics

Physical Systems

- Landscape systems – currently coastal landscapes
- Earth's life support systems – carbon and water cycles

Human Interactions

- changing spaces, making places
- global connections – migration and human rights

Geographical Debates

- hazardous earth
- climate change

Geographical skills are taught throughout each of the topics.

Students also have to complete a piece of independent research (NEA) on a topic of interest, relating to the specification.

Assessment

There are three examinations worth 80% of the A level course and a non-examined assessment worth 20%.

Paper 1: Physical Systems (22%)

- 1 hour, 30 minutes

Paper 2: Human interactions (22%)

- 1 hour, 30 minutes

Paper 3: Geographical Debates (36%)

- 2 hours, 30 minutes

Where could it lead to?

Geography helps us to develop a deep sense of understanding and appreciation of the world that we live in.

Geography is considered to be an employable subject as it offers a wide range of geographical and transferable skills.

Some examples of careers in this field could include: travel, cartography, town planning, tourism, geology, landscape architecture, meteorology, nature conservation, seismology, housing management, airline work, oceanography, waste management, teaching, social development advisory, sustainability consultancy, charities and outreach schemes.

A Level

History

Entry Requirements

Students are required to achieve at least a grade 5 in GCSE History and English. Students who achieve a grade 4 in history and/or English would need staff recommendation from the subject leader.

Study Topics

Paper 1 - The Tudors, 1485-1603

A study into the developments during Tudor England; how Henry VII began the modernisation of England, the impact of Henry VIII's 'break with Rome', the mid Tudor crisis and the 'triumph' of Elizabethan England.

Paper 2 - France in Revolution, 1774-1815

A study of the causes, events and outcomes of the French revolution and how this event has shaped modern Europe.

NEA (non examined assessment).

Civil Rights in America, 1863-1965.

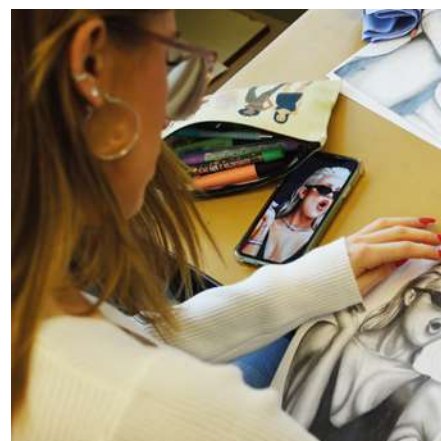
This will involve independent research into a 100 year period of History.

NEA

Coursework, a 4000 word essay, worth 20% of the course.

Where could it lead to?

Studying history can lead to careers in: law, journalism, politics, and education. It is a transferable subjects where the skills that are gleaned from studying the past will facilitate a range of career paths.



Assessment

Paper 1

2 hour 30 minute examination, including essay writing and evaluation of historians' interpretations, worth 40% of course.

Paper 2

2 hour 30 minute examination, including essay writing and assessment of primary source material, worth 40% of course.

BTEC Level 3 National Extended Certificate

Business

Entry Requirements

Students should have achieved a minimum of 5 GCSE's (Grade 4 including English Language, maths and science) (or equivalent). There is no need to have studied business studies previously

Study Topics

The Pearson BTEC Level 3 National Extended Certificate in Business is an Applied General qualification. It is for sixth form learners who want to continue their education through applied learning and who aim to progress to higher education and ultimately to employment in the business sector.

The qualification is equivalent in size to one A Level and aims to provide a coherent introduction to study some of the main functions within a business.

The learning programme covers the following content areas: the business environment, personal and business finance, marketing and the recruitment and selection process.

Assessment

The qualification is equivalent to a single A Level (50% external assessment).

You will be assessed by using a range of methods including the following:

Unit 1 - Exploring Business – mandatory coursework (internally assessed)

Unit 2 - Developing a Marketing Campaign - a supervised set task through controlled conditions (externally assessed)

Unit 3 - Personal and Business Finance – 1 ½ hour exam (externally assessed)

Unit 4 - Recruitment and Selection process – optional coursework (internally assessed)

Where could it lead to?

The qualification carries UCAS points and is recognised by higher education providers as contributing to meeting admission requirements for many courses if taken alongside other qualifications as part of a two year programme of learning. It will support entry to many higher education courses, depending on the other qualifications learners have taken. Learners should always check the entry requirements for degree programmes at specific higher education providers.

The qualification can also support progression to employment directly, or via an apprenticeship.

Enrichment Opportunities and Visits

As part of the course carrying out additional work experience could be undertaken to enrich knowledge and understanding of the various business sectors.

Guest speakers from various business sectors will also be invited into school to support the assessment process of the course.

Cambridge Technical Introductory Diploma

IT

Entry Requirements

Students are required to achieve a grade 4 plus in GCSE IT

Study Topics

The OCR Level 3 Cambridge Technical introductory diploma in IT is equivalent to one A level in terms of size.

Learners will be able to develop the core knowledge, skills and understanding of the IT sector required by employers and develop further skills by completing a range of units through a choice of these specialist pathways:

- IT infrastructure technician
- Emerging digital technology practitioner
- Application developer
- Data analyst

Assessment

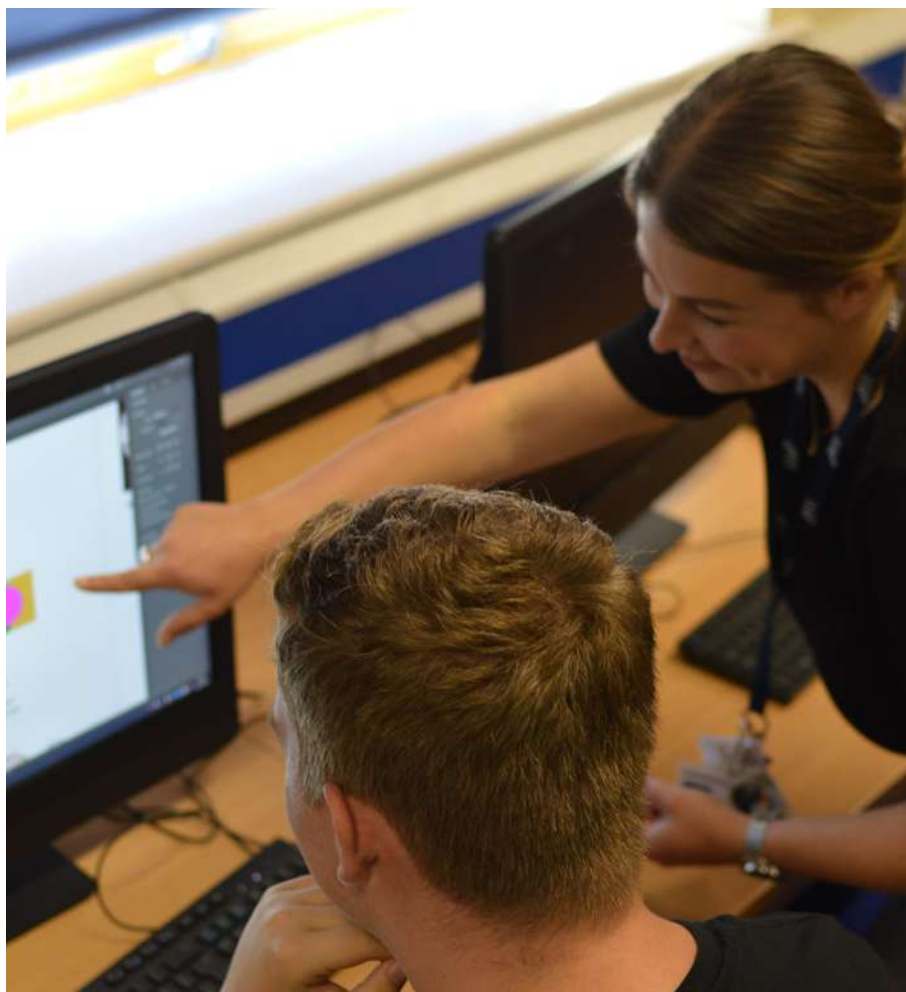
2 x 90 and 3 x 60 GLH units – at least two externally examined units and a choice of three further units which are either examined or centre assessed and moderated by OCR, which will make up a specialist endorsed pathway.

Where could it lead to?

The qualification carries UCAS points and is recognised by higher education providers as contributing to meeting admission requirements for many

courses if taken alongside other qualifications as part of a two year programme of learning. It will support entry to many higher education courses, depending on the other qualifications learners have taken. Learners should always check the entry requirements for degree programmes at specific higher education providers.

The qualification can also support progression to employment directly into the IT sector, or via an IT-related apprenticeship.



Mathematics

A Level

Mathematics

Entry Requirements

Grade 6 or above in GCSE Mathematics having studied at and been entered for the higher tier GCSE.

Study Topics

Students will study topics from pure mathematics, mechanics and statistics.

Pure mathematics will include algebra, proof, trigonometry, coordinate geometry, sequences and series, differentiation, integration, numerical methods and logarithms. Mechanics will look at using vectors, kinematics, moments, forces and Newton's laws. Statistics will introduce interpreting data, probability distributions and hypothesis testing.

A calculator that can access probabilities from statistical distributions is essential. Talk with the Maths department about what calculator to buy.

Assessment

Three 2 hour exams at the end of the course. Each exam is worth a third of the final grade.

Paper 1 - Pure Mathematics

Paper 2 - Pure Mathematics and Mechanics

Paper 3 - Pure Mathematics and Statistics

Where could it lead to?

Mathematics is a very highly regarded qualification and a truly fascinating subject that can lead to almost any career. Students with an A level in mathematics can go into finance, accounting, engineering, medicine, teaching, IT, programming, design, construction and many others.

A Level

Further Mathematics

Entry Requirements

Students are required to achieve a grade 7 or above in GCSE Mathematics

Study Topics

Students will study topics from Pure Mathematics, Mechanics and Statistics. Pure Mathematics will include proof, complex numbers, further calculus, polar coordinates, hyperbolic functions, differential equations, trigonometry and coordinate geometry. Mechanics will look at dimensional analysis, momentum, energy and power, circular motion, centre of mass and moments. Statistics will introduce discrete random variables, the Poisson distribution, continuous random variables, chi tests and the exponential distribution.

A calculator that can access probabilities from statistical distributions is essential. Talk with the Maths Department about what type of calculator to buy.

Assessment

Three 2 hour exams at the end of the course. Each exam is worth a third of the final grade.

Paper 1 - Pure Mathematics

Paper 2 - Pure Mathematics

Paper 3 - Pure Mathematics, Mechanics and Statistics

Where could it lead to?

Further Mathematics is a very sought after qualification that can provide more opportunities to enrol on the most highly regarded science, technology, engineering and maths courses at the most prestigious universities.



Physical Education

A Level

Physical Education

Entry Requirements

Students are required to achieve GCSE PE or Level 2 Vocational Sport is ideal but not essential.

A talent for sport – students will be assessed on their practical ability in one sport. Participation at club level or above is an asset.

Commitment and organisation in meeting deadlines, independent study skills, and genuine interest in sport.

Study Topic

Topic 1 - Applied Anatomy and Physiology

Topic 2 - Exercise Physiology and Applied Movement Analysis

Topic 3 - Skill Acquisition

Topic 4 - Sport Psychology

Topic 5 - Sport and Society

Practical performance
performance analysis and performance development programme.

Assessment

Component 1

Scientific principles of physical education
Written examination
40% of the qualification - 140 marks

Component 2

Psychological and social principles of physical education
Written examination
30% of the qualification - 100 marks

Component 3

Practical performance
Non-examined assessment
15% of the qualification - 40 marks

Component 4

Performance analysis and performance development programme
Non-examined assessment
15% of the qualification - 40 marks

Where could it lead to?

A university course (including Oxbridge) studying sport or PE based courses including: sports coaching, teaching, physiotherapy, sports science, medicine and sports management.

Cambridge Technical Level 3

Sport (Single, Double or Triple)

Entry Requirements

GCSE PE or Level 2 vocational sport is ideal but not essential.

A passion for sport across a number of elements such as leading, officiating, participating, analysing.

Commitment and organisation in meeting deadlines, responding to feedback and completing assignments to the highest level.

Study Topic

All Courses

- Body systems and the effects of physical activity
- Sports coaching and activity leadership
- Sports organisation and development
- Organisation of sports events

Double and Triple Courses

- Working safely in sport, exercise, health and leisure.
- Performance analysis in sport and exercise.
- Physical activity for specific groups.
- Health and fitness Testing for sport and exercise.
- Sports injuries and rehabilitation.
- Practical skills in sport and physical activities.

Triple Course

- Nutrition and diet for sport and exercise
- Sport and exercise sociology
- Biomechanics and movement analysis

Assessment

All Courses

- External written examinations
- Presentations
- Practical participation
- Leading and coaching
- Organising sporting events
- Written assignments
- Verbal interviews



Double and Triple Courses

- Delivering fitness tests
- Analyse performance and providing feedback using a range of methods

Where could it lead to?

- A university course studying all aspects of sport and PE

- Sports coaching
- Teaching
- Physiotherapy
- Sports massage and rehabilitation
- Sports development
- Sport scientist

A Level

Biology

Entry Requirements

Students are required to achieve a grade 6 in triple science or Combined Science, and a grade 6 or above in mathematics and English

Study Topics

- Biological molecules
- Cells
- Organisms exchange substances with their environment
- Genetic information, variation and relationships between organisms
- Energy transfers in and between organisms
- Organisms respond to changes in their internal and external environments
- Genetics, populations, evolution and ecosystems
- The control of gene expression

Assessment

Paper 1

Topics 1-4 35%

Paper 2

Topics 5-8 35%

Paper 3

Topics 1-8 30%

3 x 2 hour exams

Where could it lead to?

Students who have studied Biology have continued into higher education studying medicine, physiotherapy, nursing and veterinary sciences as well as molecular biology, microbiology and other biological sciences.

A Level

Chemistry

Entry Requirements

Students are required to achieve a grade 6 in triple science or combined science

Study Topics

Physical Chemistry

Atomic structure, amount of substance, bonding, thermodynamics, rate of reaction, equilibria, redox and cells and acids and bases.

Inorganic Chemistry

Periodicity, group 2 and group 7, transition metals and reactions of ions in aqueous solution.

Organic Chemistry

Nomenclature and isomerism, alkanes, halogenoalkanes, alkenes, alcohols, organic analysis, aldehyde and ketone, carboxylic acids and derivatives, aromatic chemistry, amines, polymers, amino acids, proteins and DNA, organic synthesis, spectroscopy and chromatography.

Assessment

Paper 1

Physics and Inorganic chemistry, practical skills. 2 hours, 105 marks - 35% (*short and long answers*).

Paper 2

Physical and Organic chemistry, practical skills. 2 hours, 105 marks - 35% (*short and long answers*).

Paper 3

All content including practical skills. 2 hours, 90 marks - 30% (*short and long answers including multiple choice*).

Where could it lead to?

Studying chemistry could lead on to a wide range of careers, further study areas or research topics such as biochemistry, biomedical sciences, chemical engineering, chemistry, environmental science, forensic science, geology, material sciences, medicine, natural sciences, nursing, pharmacy, teaching, veterinary science and dentistry.



A Level

Physics

Entry Requirements

Students are required to achieve a grade 6 in Physics or Combined Science. A grade 6 in mathematics and English is also essential. Those who achieve well at A level Physics also study A level Mathematics. Physics is complemented well by the other sciences at A level.

Study Topics

Year 1

- Measurements and their errors
- Particles and radiation
- Waves
- Mechanics and energy
- Electricity

Year 2

- Further mechanics and thermal physics
- Fields
- Nuclear physics

Plus one option from either astrophysics or medical physics

Assessment

Paper 1

Units 1-5 and 6.1 - 2 hours, 85 marks, 34% (*short and long answers, plus 25 multiple choice questions*).

Paper 2

Units 6, 7 and 8 - 2 hours, 85 marks,

34% (*short and long answers, plus 25 multiple choice questions*).

Paper 3

Practical skills and elective topic - 2 hours, 80 marks, 32% (*short and long answers*).

Where could it lead to?

Physics is a challenging and exciting A level option. Students delve deeper into the principles that underpin scientific and technological advancement.

Degree courses often taken by students who have an A level in physics are: mathematics, physics, engineering, computer science, medicine, chemistry, biology, biochemistry, economics, business.

Due to the quantitative and analytical skills developed during the course students with a physics A level are highly sought after by all the top universities.

The career options available to students who study physics at A-level are endless. As well as careers in the sciences and engineering all graduate employers see physics students as those with a highly transferable and valued skillset. It's not all rocket science!

BTEC Level 3 Extended
Certificate/Diploma/Extended Diploma

Health and Social Care

Entry Requirements

Students are required to achieve a grade 4+ in English and science. There is no need to have studied either health and social care or child care at level 2.

Study Topics

The course is suited to those who have a genuine interest in the welfare of others. It is particularly suited to those who wish to embark on a career in health or social care and work within settings such as a hospital, care home or special educational needs sector. The BTEC Extended diploma (Health Studies route) offers a specialist qualification that focuses on aspects of employment within the appropriate vocational sector. Amongst other units of work, you will study human lifespan development, working in health and social care and anatomy and physiology for health and social care.

Assessment

The qualification can be taken as a single (58% external exam), double (46% external exam) or triple option (42% external exam).

You will be assessed by using a range of methods including the following:

Unit 1 - Human lifespan development
1 ½ hour exam (*All courses*)

Unit 2 - Working in health & social care
1 ½ hour exam (*All courses*)

Unit 3 - Anatomy and physiology for health and social care
1 ½ hour exam (*Extended Diploma*)

Unit 4 - Enquiries into current research in health and social care
A supervised set task (*Diploma*)

There are further mandatory units of work which will be completed as set coursework such as caring for someone with dementia, diet and nutrition and public health.

Where could it lead to?

Degree/Foundation Degree in Health, Social Care or educational programmes, HNC/HND in Health, Social Care and educational programmes or modern apprenticeships.

Enrichment Opportunities

You may have the option to become a Dementia Friend or Champion and/or work towards additional recognised qualifications such as First Aid.

Work Experience: students opting for the certificate do not require any work experience although this would be beneficial.

Students opting for the diploma require a minimum of 50 hours in 3 different settings.

Students opting for the extended diploma require a minimum of 100 hours in 3 different settings. Regularly used work experience settings include,

Sheffield Teaching Hospital, Rotherham District General Hospital, Universal Embrace Holistic Therapies, Willow SEN School, Woodlands Care Home, Dinnington Primary School and Anston Brook Primary School.

Visits

Learners will have the chance to support community based projects which will vary year to year. Previous visits include, Rotherham District General Hospital, Thackray Medical Museum in Leeds and Sheffield Hallam University.

A Level

Psychology

Entry Requirements

5 GCSE's at Grade 5 or above (or equivalent), must have a Grade 6 or above in English and maths. Students do not need to have studied GCSE Psychology to study this subject at A level, but it would be advantageous.

Psychology students will be assessed heavily on their abilities to construct essays; therefore, a Grade 6 in English is preferable and highly recommended. Overall 10% of the course will be related to maths elements, therefore a Grade 6 in Maths is highly recommended.

Study Topics

Psychology is the fascinating scientific study of human behaviour and mental

processes. By studying psychology, you will gain a better understanding of behaviour and mental processes. You will gain a better insight of why people act in different ways. You will also find out what motivates people, their thought processes and gain a better understanding of yourself.

Over a two year period you will cover a spectrum of subjects which, between them, will help you make sense of people and identity issues which affect us all.

You will cover a range of topic areas including:

Year One

Social Influence, memory, attachment, psychopathology, psychology in context, approaches in psychology, biopsychology, research methods.

Year Two

Issues and debates in psychology could include any 3 of the following: Schizophrenia, eating behaviour, stress, aggression and forensic psychology.

Assessment

Year One – 2 exams worth 50% each (internally assessed)

Year Two – 3 exams external assessment for the final overall grade.

- Paper 1 Introductory topics in psychology, 33.3%
- Paper 2 Psychology in context, 33.3%
- Paper 3 Issues and Options in psychology, 33.3%

Where could it lead to?

A psychological background and understanding will be very useful in any career in which you are dealing with people. Psychology teaches transferable skills including critical analysis, independent thinking and research.

A wide number of other professions are also available for successful psychology graduates such as a psychologist, teaching, law, police, forensic criminology, business, mental health, social work, the probation service, counselling and market research.

Enrichment Opportunities and Visits

There may be opportunities to visit local universities to examine how psychological research is undertaken.

A Level

Sociology

Entry Requirements

Students are required to have achieved 5 GCSE's at Grade 4 or above (or equivalent), must have a Grade 5 or above in English and maths. You do not need to have studied GCSE Sociology to study this subject at A level, but this would be advantageous.

Sociology students will be assessed heavily on their abilities to construct essays; therefore, a Grade 6 in English is preferable and highly recommended.

Study Topics

Sociology is the scientific study of society and human social life. It studies human behaviour in social situations. It focuses on how we organise life together. Sociology is rigorous and systematic in its approach and its claims are based on sound research evidence from sociological studies, theories and perspectives.

Over a two year period you will cover a spectrum of subjects which, between them, will help you make sense of the society we live in and understand the culture and identity issues which affect us all. You will cover a range of topic areas including:

Year One

Education, families and households, research methods, sociological perspectives.

Year Two

The media, crime and deviance, further development and understanding of research methods and sociological perspectives.

Assessment

Year One - 2 exams worth 50% each (internally assessed)

Year Two - 3 exams external assessment for the final overall grade.

- **Paper 1** Education with theory and methods – 33.3%
- **Paper 2** Families and households and the media – 33.3%
- **Paper 3** Crime and deviance with theory and methods – 33.3%

Where could it lead to?

A sociological background and understanding will be very useful in any career in which you are dealing with people. It can play a specific part in the training in the caring professions, human resources management, journalism and media production, administration and management, social work, research, teaching and lecturing. A wide number of other professions are also available for successful sociology graduates such as in law, police, forensic criminology, politics, accountancy, solicitors nursing, medicine, social work, the probation service, advertising, PR and market research.

Enrichment Opportunities and Visits

There may be opportunities to visit local universities to examine how sociological research is undertaken; and the Galleries of Justice, Nottingham.





Engineering & Design

Cambridge Technical Level 3

Engineering

Entry Requirements

Students are required to achieve a minimum grade 5 in mathematics and science.

Study Topics

Topics covered include:

- Applied mathematics
- Mechanical principles
- Electrical and electronic systems
- Materials properties
- Computer Aided Design (CAD)

Assessment

The course is graded pass, merit, distinction. There are 6 units of which 4 are assessed through written exams:

- Mathematics for Engineering
- Science for Engineering
- Principles of Mechanical Engineering
- Principles of Electronic and Electrical Engineering

There are a further 2 internally assessed coursework units.

Where could it lead to?

This course is ideally suited to students who are aiming to study engineering or science at university and enter technical careers at graduate level. Alternatively, this course is also excellent preparation for advanced apprenticeships in the engineering sector.

A Level

Product Design

Entry Requirements

Students are required to achieve 4+ grade in design and technology and maths.

Study Topics

Topics covered include:

- Materials and their applications
- Classification of materials, method of testing and investigating materials.
- Performance characteristics of materials.
- Smart and modern materials.
- Enhancements of materials and use of finishes.
- Modern industrial and commercial practise.
- Digital design and manufacture, CAD CAM, virtual modelling.
- Enterprise and marketing.
- Design theory, social, moral and ethical issues.
- Responsible design, environmental and conservation issues.
- Quality assurance and quality control.

Assessment

Exam 1

Technical principles
Written exam (2.5 hours)
30% of A Level

Exam 2

Designing and making principles

Written exam (1.5 hours)

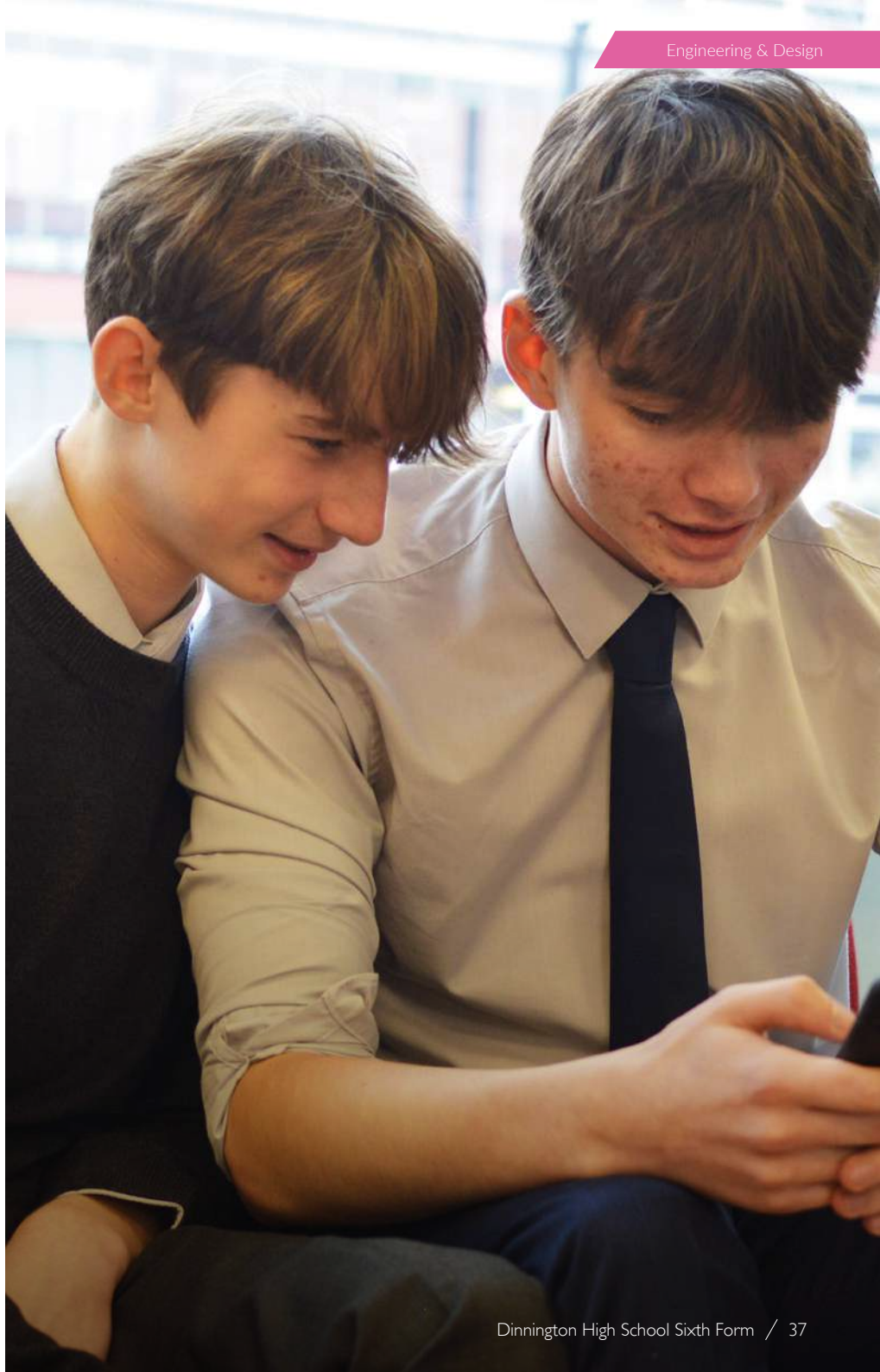
20% of A Level.

Non-exam element

Practical application of technical principles, designing and making principles. Coursework project, 50% of A Level.

Where could it lead to?

Product design careers cover an extremely broad spectrum of industries. Consequently, the emphasis on technical or aesthetic design expertise can vary from role to role. More technical projects will demand a greater understanding of engineering, where function may dictate form. More artistic projects are likely to focus on form and usability.



The LEAP Vision

Achieving excellence is the overriding ambition of our Trust. We place students at the centre of everything we do, creating a culture of success and a love of learning which enhances students' achievements and their personal, social and emotional wellbeing.

We achieve our vision through:

Excellence for our Students

Inspiring, challenging, engaging and supporting all of our students to achieve excellent outcomes irrespective of their starting points. Every student is provided with a clear progression route to the next stage of their education and career.

Excellence for our Staff

Driving excellence in teaching and learning, and implementing a knowledge-rich curriculum that meets the needs and aspirations of all students.

Excellence for our Schools

Enhancing central and shared services to maximise organisational and cost efficiencies.

Excellence for our Communities

Building positive partnerships with our parents, primary schools and the wider community.



A stylized, handwritten signature in white ink, which appears to read 'W. Barsby'.

Wayne Barsby
Chief Executive

Student Destinations

Chemical Engineering
Keele University

Clinical Sciences
University of Bradford

Education Studies
Bishop Grosseteste University

Physical Education and Sport
University of Lincoln

Aircraft Engineering and Pilot Studies
University of Salford

Forensic Science and Criminology
University of Derby

Speech and Language Therapy
Leeds Beckett University

Industrial Design
Loughborough University

PE and Sport
University of Lincoln

Medicine
University of Sheffield

Professional Policing Practice
South Yorkshire Police





Doe Quarry Lane, Dinnington
Sheffield S25 2NZ

01909 550066
sixthform@din.leap-mat.org.uk